

T BARNY

Over 40 Years of Sculpture



Welcome to the world of T Barny Sculpture.

It is my passion for stone that inspires me to carve my one-of-a-kind designs in mobius, superellipsoid, curvilinear, and abstract shapes.

Enjoy this portfolio for its history, education, and visual experience. Art is something that speaks to you. Let this portfolio tell you the T Barny story. Inside, you will find a small selection of currently available sculptures, biography, statements, and a condensed resume.

For more information, please contact me at (707) 431-8378 or by e-mailing sculpture@tbarny.com

T Barny's sculpture can be found in the following collections:

Fred Turner, former McDonalds CEO
William Cox Jr., Dow Jones Inc. Heir
Bill & Melinda Gates, Microsoft Corporation
Nasher Museum of Art, Duke University
Donald Kendall, former PepsiCo CEO
Greg Flynn, CEO of Flynn Holdings
Rhode Island School of Design Museum of Art
Stanford Hospital

and hundreds more, spanning 23 countries on 6 continents.



“Like all art, the pieces speak to you. Our home is a work of art itself, and T Barny’s pieces have a permanent location that work in harmony with the house.”

- *Bill Carney & Scott Monroe*

“The power and mystery of T Barny’s sculptures come from his intuitive sense of the stone, which allows extraordinary technical skills to draw out of it the lines and volumes of the finished piece. Each encounter with the piece has the thrill of revelation; the secret of stone seems to hint at the life of time and space”

- *Albert Gelpi*

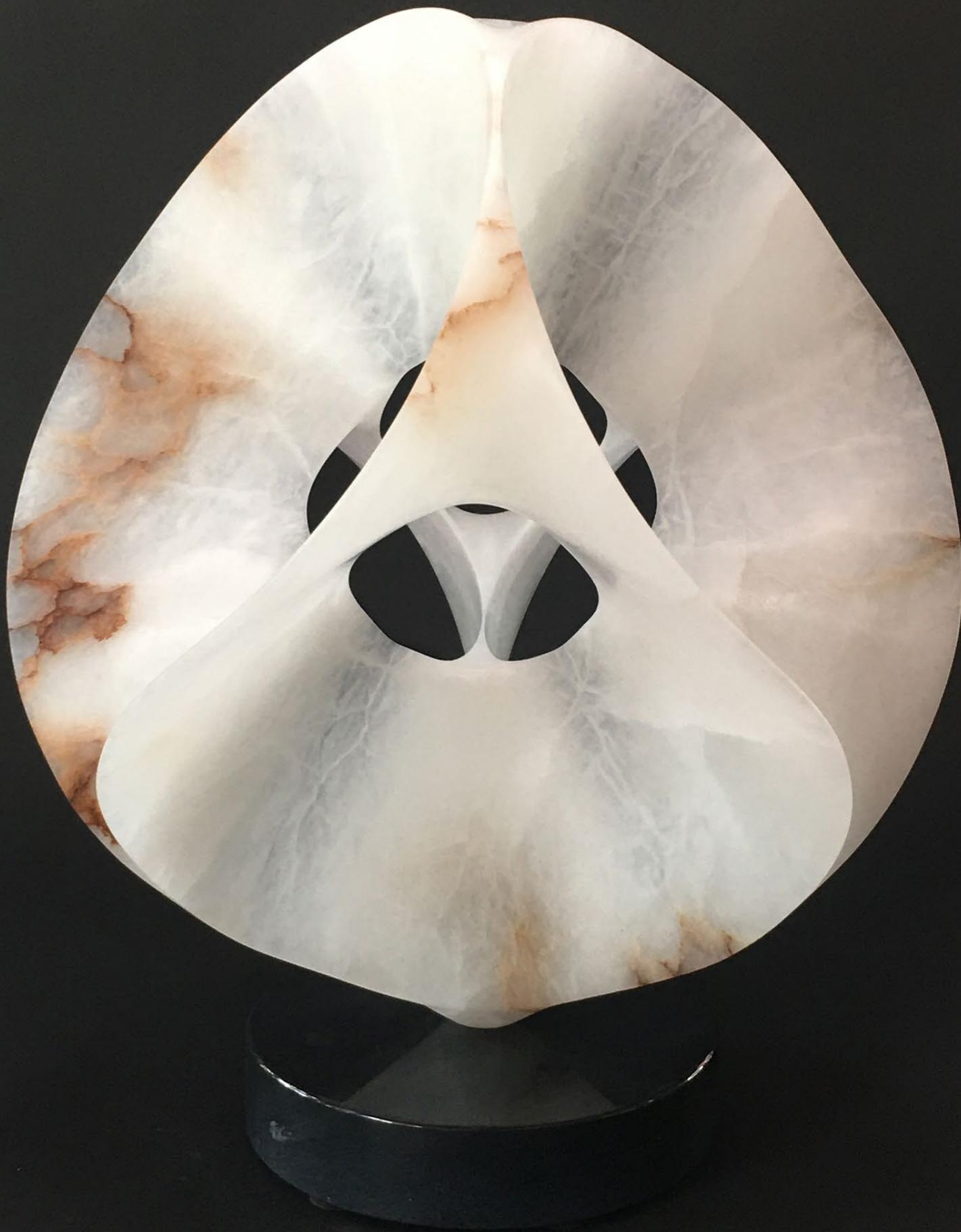
“Every time I walk by one of T Barny’s masterpieces, it subtly calms and soothes my soul.”

- *Bert & Linda Fornaciari*



AERIE - 'Falcons Nest'

Greek Marble | 25" x 21" x 23" | \$19,500 | [Click here for 360° view](#)



AURORA- 'Roman Goddess of Dawn'

Italian 'Volterra' Alabaster | 20" x 17" x 19" | \$16,900 | [Click here for 360° view](#)



BALDACHIN - 'Ceremonial Canopy of Stone'

Italian Statuario Marble | 34" x 22" x 12" | \$26,500 | [Click here for 360° view](#)



DUE CUORI - 'Two Hearts'

Massachusetts Steatite | 30" x 24" x 14" | \$28,400 | [Click here for 360° view](#)



FLEUR-DE-LYS - 'Three Petals'

Utah Calcite | 19" x 11" x 4" | \$4,700 | [Click here for 360° view](#)



PALADIN - 'Leading Champion'

Portugal Marble | 44" x 15" x 8" | \$13,800 | [Click here for 360° view](#)



PRAESCIRE - 'Knowing Beforehand'

Carrara Marble | 22" x 10" x 4" | \$5,700 | [Click here for 360° view](#)



QUOIN - 'Corner Stone'

Alaskan Sitka Marble | 16" x 9" x 5" | \$8,900 | [Click here for 360° view](#)



SEGUE- 'Uninterrupted Transition'

Arizona Sandstone | 26" x 19" x 8" | \$9,600 | [Click here for 360° view](#)



SOUGH - 'Wind'

Italian Ordinario Marble | 23" x 20" x 3" | \$6,000 | [Click here for 360° view](#)



STRIAE - 'Striped'

Nevada Zebra Marble | 21" x 11" x 5" | \$9,800 | [Click here for 360° view](#)



SPUZZATA - 'Splash'

Italian Calacata Marble | 20" x 6" x 8" | \$4,700 | [Click here for 360° view](#)



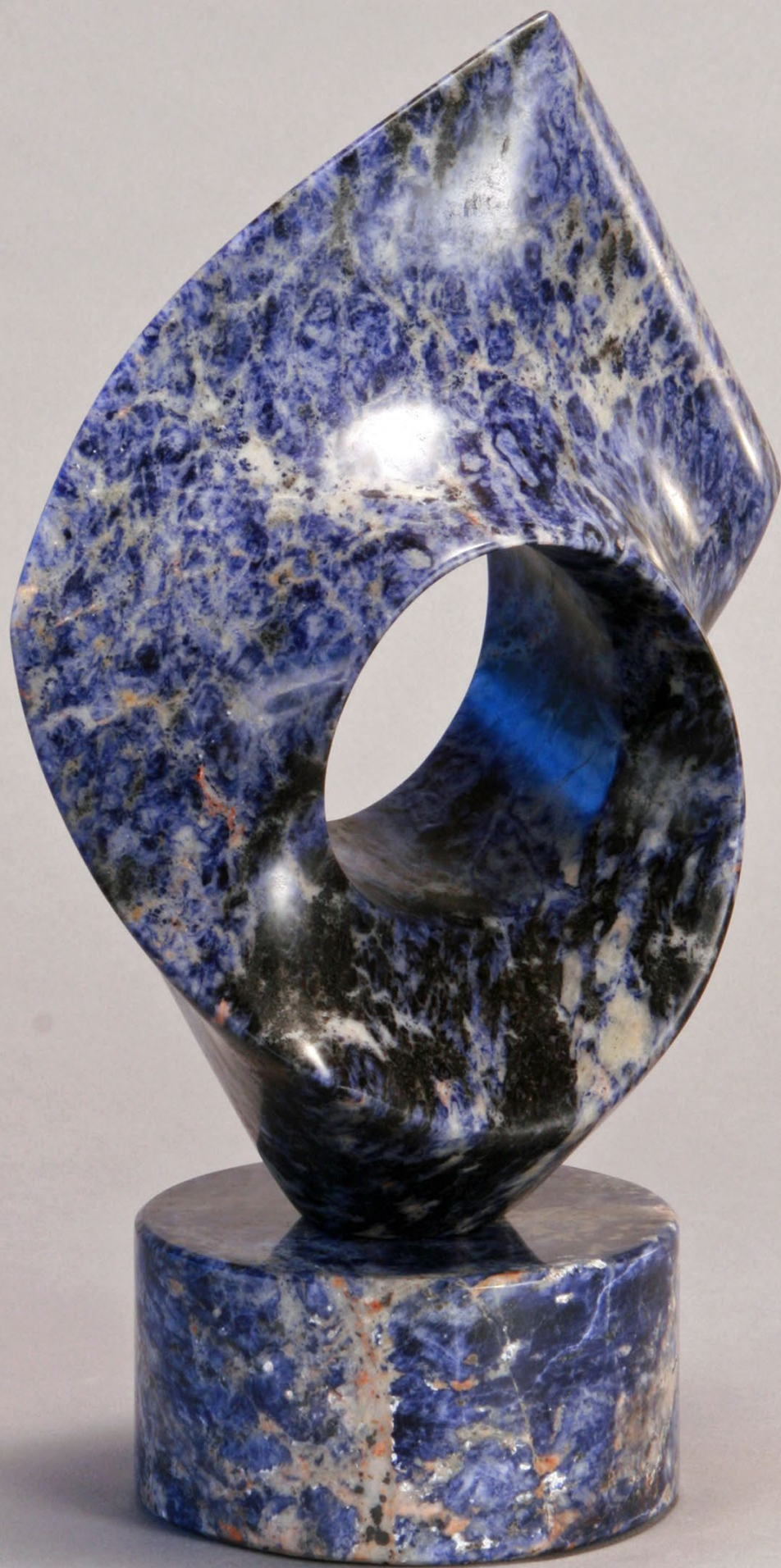
TEMPLAR - 'Knights Of'

Vermont Champlain Marble | 23" x 22" x 4" | \$22,600 | [Click here for 360° view](#)



TRINITY - 'Three'

Mexican Fluorite | 20" x 24" x 8" | \$12,800 | [Click here for 360° view](#)



TETRAD - 'Group of Four'

Brazilian Sodalite | 13" x 8" x 5" | \$4,900 | [Click here for 360° view](#)



TYTONIDAE - 'Species of Owl'

Picasso Marble | 16" x 20" x 8" | \$15,000 | [Click here for 360° view](#)



VALKYRE - 'Norse Maiden Warrior'

Italian "Volterra" Alabaster | 34" x 25" x 17" | \$33,400 | [Click here for 360° view](#)

BRONZE “GEM” COLLECTION

I have created limited edition bronzes of my signature stone sculptures. These pieces clearly define the intent and style of my work. The Gem Collection emphasizes both texture and color, while preserving the integrity of the original hand-carved stone forms.

Using the lost wax technique, wax molds are taken of my originals. The wax image is placed in a ceramic shell mold, and then cast with molten bronze at the Bronze Plus foundry in Santa Rosa, California. The cast bronze is sanded to a smooth, fine finish before applying a patina.

The patina is created by a series of chemical washes applied to the hot surface of the design. Subtle yet classic, the floret texture creates a depth and mystery within its color, unique to each bronze in an edition. The patinas of Jade, Sapphire, Ruby, and Turquoise bring a new dimension to these unique shapes.



JADE



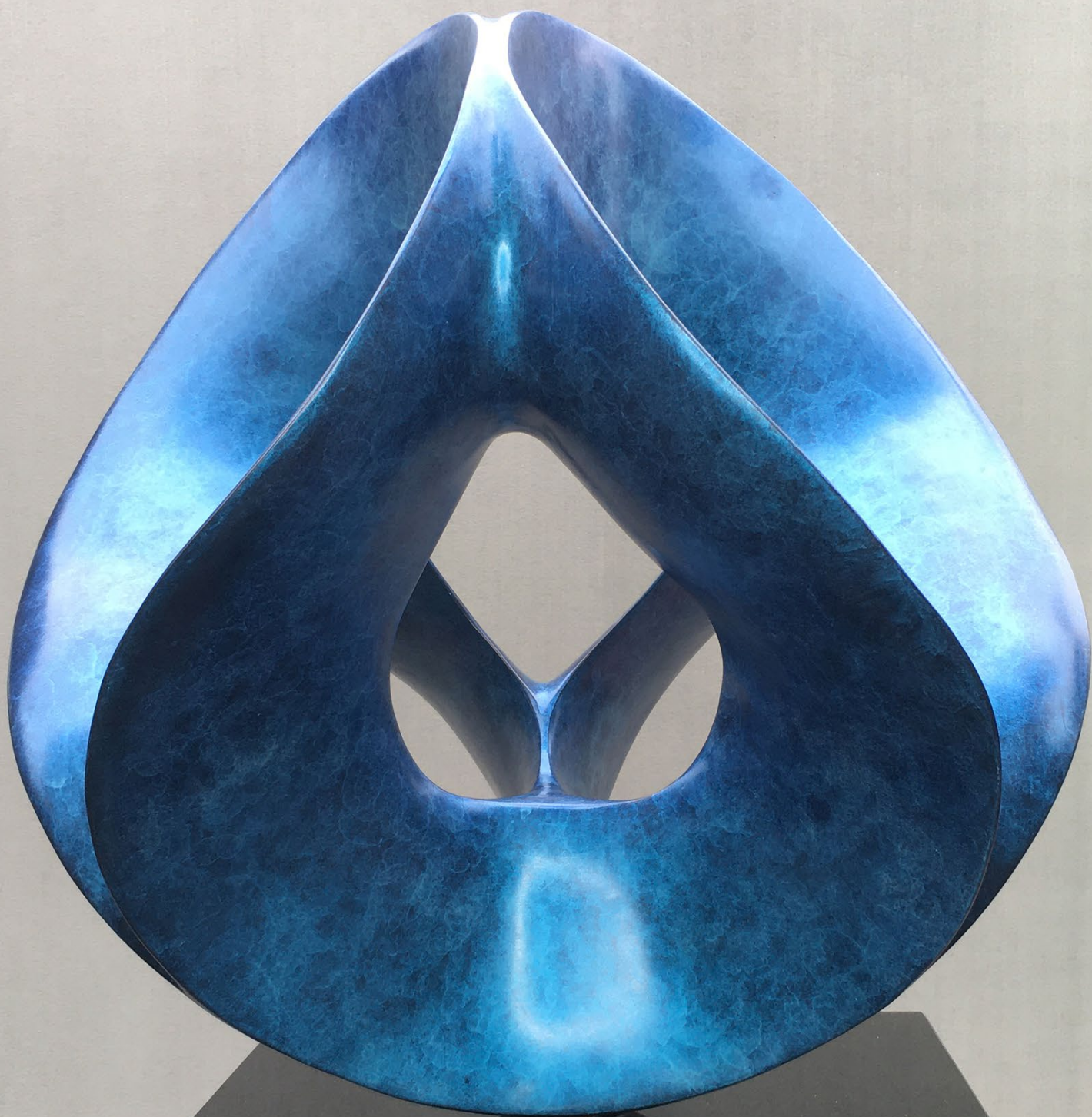
RUBY

SAPPHIRE



TURQUOISE





CARDIA B - 'Heart'

Bronze, Edition of 25, Sapphire Patina | 23" x 22" x 22" | \$18,600 | [Click here for 360° view](#)



CATENA B - 'Chain of Connected Ideas'

Bronze, Edition of 25, Ruby Patina | 11" x 9" x 6" | \$6,850 | [Click here for 360° view](#)



CATENA X - 'Large Chain of Connected Ideas'

Bronze, Edition of 25, Turquoise Patina | 77" x 31" x 31" | \$63,300 | [Click here for 360° view](#)



CIRCO - 'To Traverse'

Bronze, Edition of 25, Sapphire Patina | 23" x 16" x 16" | \$18,500 | [Click here for 360° view](#)



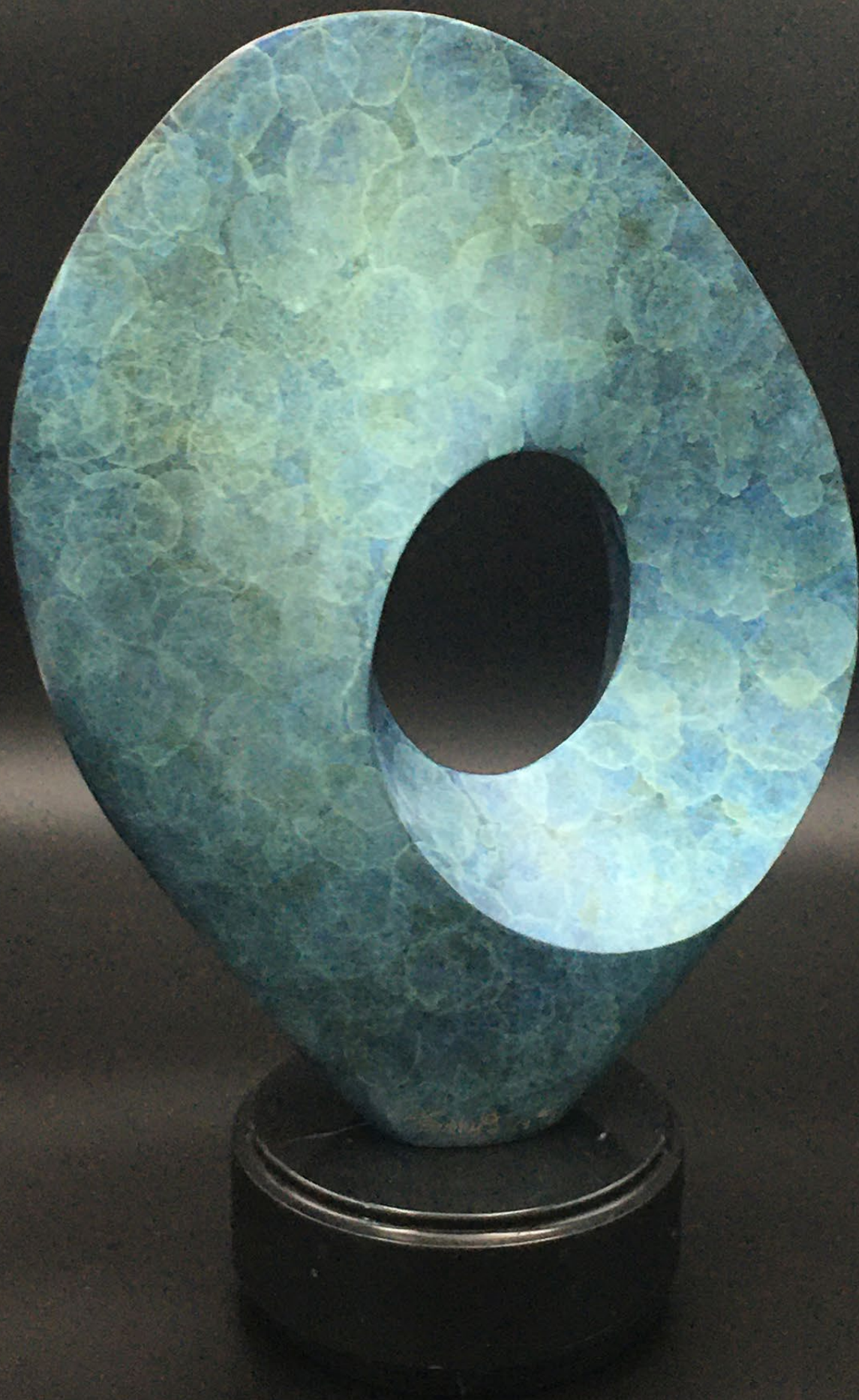
CIRCO X - 'To Traverse'

Bronze, Edition of 25, Sapphire Patina | 98" x 61" x 53" | \$129,000 | [Click here for 360° view](#)



EFFLEURAGE - 'Flowing, Flowering Movement'

Bronze, Edition of 6, Turquoise Patina | 82" x 13" x 10" | \$28,400 | [Click here for 360° view](#)



ELARA B - 'Moon of Jupiter'

Bronze, Edition of 25, Jade Patina | 17" x 11" x 5" | \$6,400 | [Click here for 360° view](#)



ERNE - 'Sea Eagle'

Bronze, Edition of 6, Turquoise Patina | 31" x 24" x 16" | \$17,900 | [Click here for 360° view](#)



NAUTILUS - 'Chambered Sea Urchin'

Bronze, Edition of 6, Jade Patina | 24" x 15" x 10" | \$17,400 | [Click here for 360° view](#)



THISBE - 'Female Figure in Greek Mythology'

Bronze, Edition of 25, Jade Patina | 11" x 7" x 4" | \$4,600 | [Click here for 360° view](#)



WINDAN - 'Female Figure in Greek Mythology'

Bronze, Edition of 12, Jade Patina | 12" x 12" x 3" | \$4,900 | [Click here for 360° view](#)



Sculptor's Statement

I aspire to create sculpture that reflects a world filled with magic and wonder, celebrating the interrelated continuousness of all things through my Mobius-like works, with a single, traceable, looping edge.

My works are produced through direct carving. I have no preconceived notions or models for my creations. Instead, I allow the natural rhythms of each specific block to guide me toward the final product. I make use of negative space as much as the positive body in order to establish an affinity with the stone, evoking a feeling as sublime as the pieces themselves.

During my 40+ year career, I have carved more than 1000 works in steel, bronze, wood, and water. My curvilinear, Mobius-inspired stone sculptures are my most celebrated.

BIOGRAPHY

As a young child, T Barny loved to make sand castles on the beach. People never recognized his castles, as they were truly his first abstract sculptures.

Over his career, he has worked in almost every material, form, and scale; from carved stone to neon, argon, or mercury gas-filled blown glass; from classical clay figures to welded or cast metal abstract objects; from jewelry-size sculptures to monumental forty-foot fabric installations and landscape garden designs. This encompassing experience has drawn him back to the oldest material of humankind, the one that he continues to find the most expressive...Stone.

A native Californian, he has spent the last thirty eight years in a love affair with stone. He imports personally selected marble from quarries all over the world, then works to attain an affinity with the blocks by listening to their rhythms rather than imposing his own. The flaws of geological tension are carved away to release a sound-free form inherent in that specific stone.

He studied art, sculpture and design at Chote, Denison, Stanford, and Brown. He received his Bachelor of Fine Arts degree from the Rhode Island School of Design, going on to exhibit in over 400 group and solo exhibitions spanning 100 galleries worldwide. He has carved 205 types of stone from 43 countries, and is always on the lookout for more.

When people hear beautiful music, they feel it. He aspires to produce the same harmony in people when they see and touch his sculpture; providing an experience of visual melody, enticing them to touch stone made smooth and silky, inviting exploration of the partnership mankind and nature can create. When people see T Barny's art, the most frequent response is, "How does he do that?"

Far from a commentary on the ugliness of life, T Barny strives to leave those who experience his sculpture with positive feelings; enriched and stimulated by the beauty of the world around them.

RESUME

A sampling of over 400 exhibits in nearly 4 decades.
Collected in 24 countries.

Selected Solo Shows

Hunter Kirkland Contemporary & other galleries
in Santa Fe, New Mexico for over 30 years
Green Music Center, Rohnert Park, California '14, '15
Titus Contemporary, Carmel, California '14, '15, '16
Melissa Morgan Fine Art, Palm Desert, California '12, '15
Broadhurst Gallery, Pinehurst, North Carolina '11
District Gallery, Park City, Utah '10
Powell Street Gallery & other galleries in San Francisco, CA
'86, '87, '00, '02, '04 to '09, '12
Joy Horowich Gallery, Chicago, IL '89, '91, '92, '94, '95

Selected Invitational Shows

City of Santa Clara '13
CODA Gallery & other galleries in New York '83, '95, '01, '05, '19
Jayne Gallery, Kansas City, Missouri '94, '95, '01
Museum of Modern Art, San Francisco, CA '95
Frye Museum, Seattle, Washington '87
California Museum of Art, Santa Rosa, CA '89
Penascola Museum, Florida '02
Paradise Ridge Sculpture Gardens, CA '08 to '11

T Barny Collector Events

International Sculpture Day '16 to '19, T360 '16, Spiritstone '14,
Brunch '13, Year of the Mobius '12, T30 '11,
Gem Collection '10, World of Stone '09,
CalciTe '09, iTaly '07, T25 '06, Greece '03

International Shows

Florence, Italy - Westbank, Canada
Hokkaido, Japan - Barcelona, Spain

Artist in Residence

Carrara, Italy - Tinos, Greece
Woodstock, New York - Vermont - Kansas - Texas

Selected Publications, Awards & Honors

International Prize Venice Italy, Canaletto Artist Career Award '16
Marco Polo Art Ambassador Award '15
Southwest Art Magazine Feature Article, July '14, '17
STONE WORLD Magazine '09
The Robb Report '08
Sculptural Pursuit Magazine '07
Building Stone Magazine '07
"Editor's Choice Award" Sculpture Competition '07
Quantum Corporation "Best of Show" '05
Others Include:
"Best Body of Work" CA '09
"Award of Excellence" CA '07
"First Place" CA, CT '82, '89, '95, '97
"Honorable Mention" CA, VA '82, '95, '00, '07
California Museum of Art "Purchase Award" '90

Selected Public & Corporate Collections

PepsiCo Sculpture Gardens | Melinda Gates - Microsoft, Inc.
Shaw Mudge & Co. | RISD Museum of Art
Kendall Jackson Wine Estates | Hills Brothers Coffee
City of Providence | City of Fremont | Dow Jones, Inc.
McDonalds Inc. | Winslow Capital Management
AT&T Center, San Antonio TX | Sylviane Mouda Designs Paris, France
Sum Yee Loong, Singapore | Sumike Kurokawa Tokyo, Japan

MOBIUS

My fifty year fascination with the mobius - the simple, original strip introduced to me in the third grade - has led me to what I continue to carve out of stone today. The Mobius Strip was discovered in 1858. It is a continuous loop known for its one-sidedness. My mobius design has one side and one edge, but it is three-dimensional and travels through itself on a continuous intertwined loop. This is my expression of non-duality; my statement of oneness, creating an interrelated continuousness. We are all connected to each other, to the earth, and to the universe around us.



SUPERELLIPSOID

A superellipsoid is a mathematical term for an equation to symmetrically round the corners of a rectangle. Hence, the six rectangular planes of a prism are rounded in my superellipsoid-inspired sculptures. Sometimes the cube shapes are elongated in order to get more height out of the size of the block of stone. Your eyes are drawn to the symmetry of some angles, then surprised by the asymmetry of other views. Still, the whole form flows throughout itself in what I call “bi-symmetry.” What your eyes see and what your brain comprehends are not always connected.

CURVILINEAR

I want to see the stone bend. My curvilinear pieces emerged in my work at the beginning of my sculpture career. Each stone draws on my intuitive sense of what it is to become. My designs are contained by or consist of curved lines. These shapely pieces are shell-like, figurative, suggestive forms that speak lyrically to the observer. My curvilinear sculptures are often called “elegant” and “stunning”, and I like to think that they set the perfect statement atop a black classical piano.

